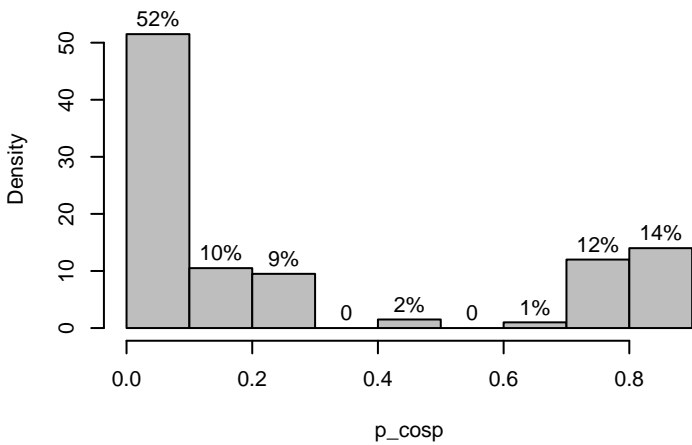
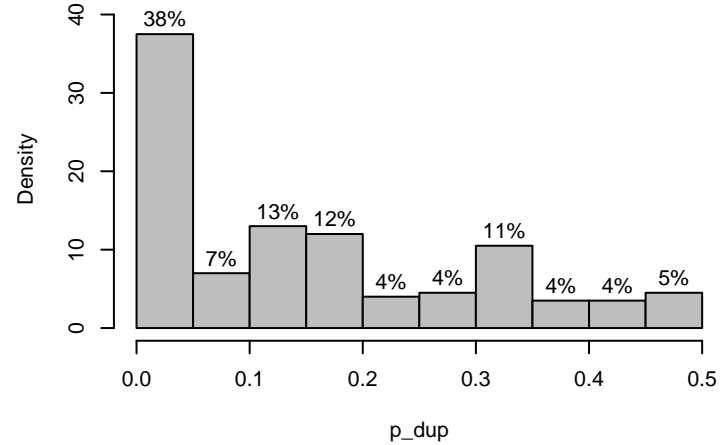


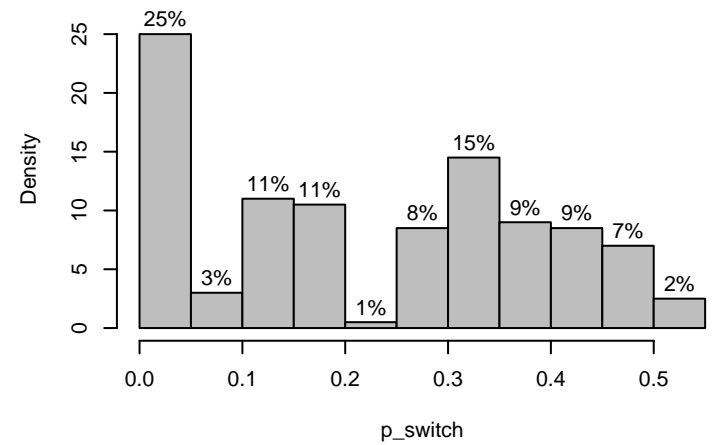
file.nex
round 3 – simulation



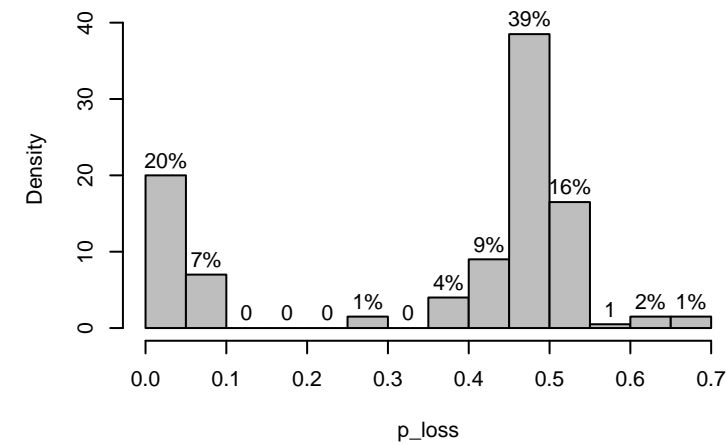
file.nex
round 3 – simulation



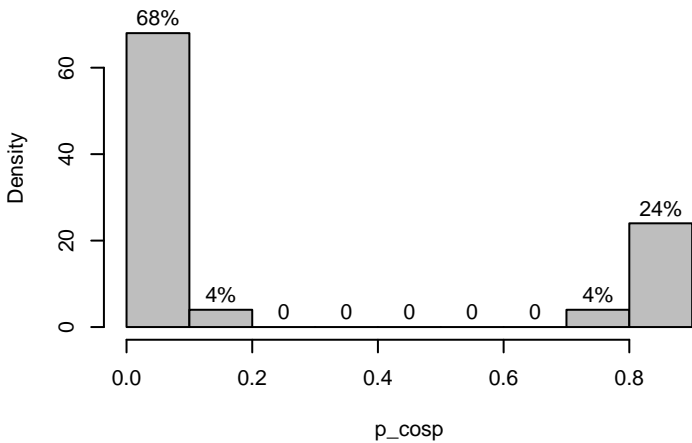
file.nex
round 3 – simulation



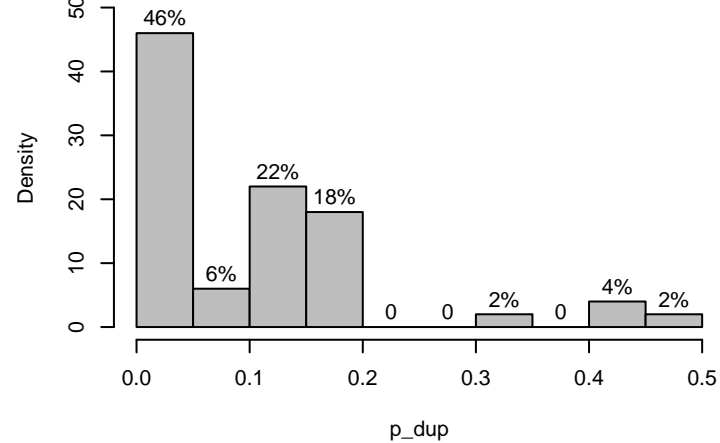
file.nex
round 3 – simulation



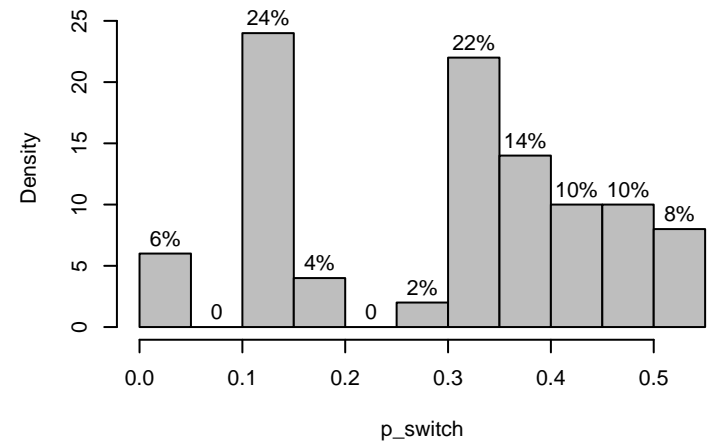
file.nex
round 3 – epsilon = 0.2342



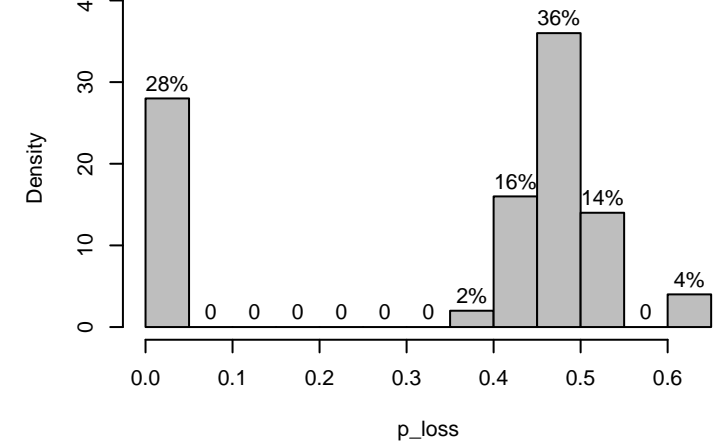
file.nex
round 3 – epsilon = 0.2342



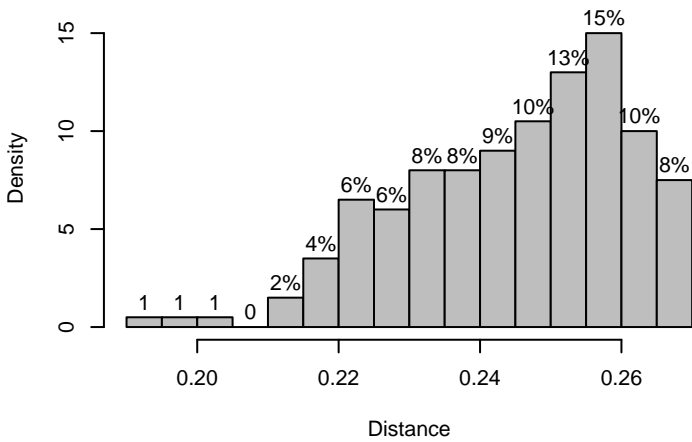
file.nex
round 3 – epsilon = 0.2342



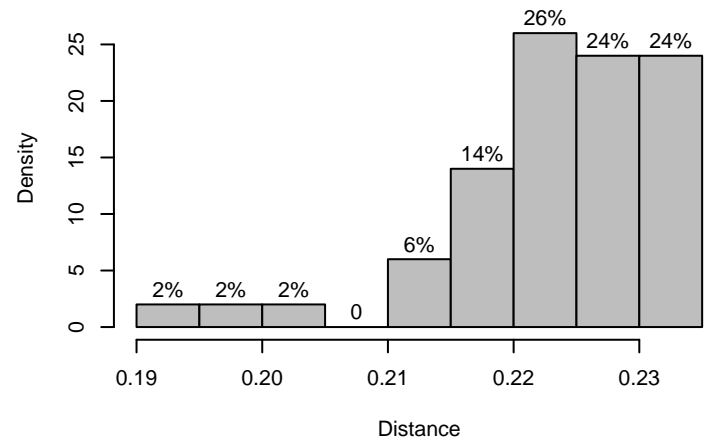
file.nex
round 3 – epsilon = 0.2342



file.nex
round 3 – simulation



file.nex
round 3 – epsilon = 0.2342



Nexus file: file.nex
 Host/Parasite tree: 5/6 leaves
 Prior distribution: 2000 vectors
 Number of trees: 1000 trees
 Maximum number of trees: 5000 trees
 Number of rounds: 3 rounds
 Perturbation: 0.0100
 Tolerances: 0.1000,0.2500,0.2500
 Simulation Model: 1 – From the root to the leaves model
 Cyclicity test: 2 – Donati et al., 2014.
 Metric: 3 – EVENTS AND MAAC Metric
 (alpha1/alpha2): 0.7000/0.3000
 Alpha (cosp.,dupl.,switch,loss): (1.0000,1.0000,1.0000,1.0000)